



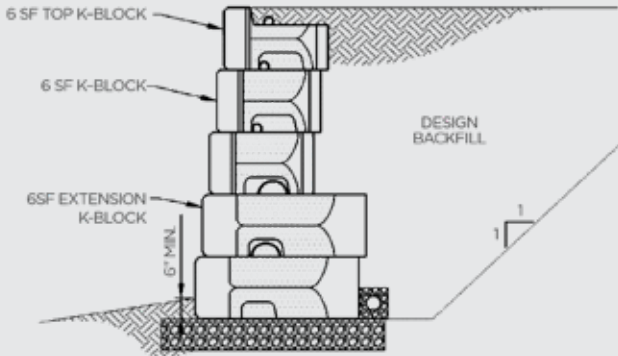
**Building paradise,
one K-Block at a time.**



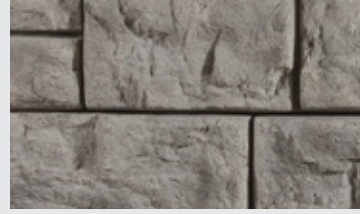
For information on products and or access to brochures and catalogues
call: **1.902.883.2201** or you can reach us toll free at: **1.877.96.BRICK**
salesinfo@shawbrick.ca | www.shawbrick.ca

K-Block

The larger, six square foot K-Block has benefits stacked in your favour for retaining wall projects on a grander scale. It is the best and most-innovative block available in precast concrete. K-Block delivers fully-engineered block technology that greatly reduces installation time and labour costs – with unmatched safety, durability and aesthetics.



Colour Options



GRANITE BLEND



EARTH BLEND

NOTE: All colours are intended to be representative only. For accurate colour selection, please request an actual sample. Sizes are nominal.

Available sizes

6 SF Blocks



6 SF K-BLOCK
48-L x 28-W x 18-H in
1219.2-L x 711.2-W
x 457.2-H mm

Weight: 965 lbs (438 kg)

Earth Blend 60026
Granite Blend 60027



6 SF EXTENSION
48-L x 44-W x 18-H
in 1219.2-L x 1117.6-W
x 457.2-H mm

Weight: 1530 lbs (695 kg)

Earth Blend 60022
Granite Blend 60023



6 SF TOP
48-L x 28-W x
18-H in 1219.2-L x 711.2-W
x 457.2-H mm

Weight: 811 lbs (368 kg)

Earth Blend 60024
Granite Blend 60025



**6 SF CORNER
STANDARD**
50-L x 26-W x 18-H in
1270-L x 660.4-W
x 457.2-H mm

Weight: 1510 lbs (685 kg)

Earth Blend 60046
Granite Blend 60047



**6 SF FREE STANDING
FINISHED END, DUAL FACE**
48-L x 28-W x
18-H in 1219.2-L x
711.2-W x 457.2-H mm

Weight: 1873 lbs (850 kg)

Earth Blend 60042
Granite Blend 60041



**6 SF FREE STANDING
DUAL FACE**
48-L x 28-W x
18-H in 609.6-L x
711.2-W x 457.2-H mm

Weight: 1543 lbs (700 kg)

Earth Blend 60030
Granite Blend 60031

3 SF Blocks



3 SF K-BLOCK
24-L x 28-W x 18-H in
609.6-L x 711.2-W
x 457.2-H mm

Weight: 471 lbs (214 kg)

Earth Blend 60015
Granite Blend 60016



3 SF EXTENSION
24-L x 44-W x
18-H in 609.6-L
x 1117.6-W x 457.2-H mm

Weight: 727 lbs (330 kg)

Earth Blend 60011
Granite Blend 60012



3 SF TOP
24-L x 28-W x
18-H in 609.6-L
x 711.2-W x 457.2-H mm

Weight: 394 lbs (179 kg)

Earth Blend 60014
Granite Blend 60017



**3 SF HALF BLOCK FREE STANDING,
DUAL FACE**
24-L x 28-W x 18-H in 609.6-L x 711.2-W
x 457.2-H mm

Weight: 1036 lbs (470 kg)

Earth Blend 60052
Granite Blend 60051



**3 SF HALF BLOCK, FREE STANDING,
DUAL FACE, FINISHED END CAP**
48-L x 28-W x 18-H in 1219.2-L x 711.2-W
x 457.2-H mm

Weight: 1124 lbs (510 kg)

Earth Blend 60054
Granite Blend 60053

Steps



6-FOOT
72-L x 28-W x 6-H in
1828.8-L x 711.2-W x
152.4-H mm

Weight: 942 lbs (428 kg)

Earth Blend 60010
Granite Blend 60009



5-FOOT
60-L x 16-W x 6-H in
1524-L x 406.4-W x
152.4-H mm

Weight: 441 lbs (200 kg)

Earth Blend 60036
Granite Blend 60032



4-FOOT
48-L x 16-W x 6-H in
1219.2-L x 406.4-W x
152.4-H mm

Weight: 371 lbs (169 kg)

Earth Blend 60003
Granite Blend 60002
Natural Blend 60001



4-FOOT (HOLLOW)
48-L x 20-W x 7-H in
1219.2-L x 508-W x
177.8-H mm

Weight: 286 lbs (130 kg)

Earth Blend 60006
Granite Blend 60005

Cap/ Corner Cap



CAP/ CORNER CAP
48-L x 32-W x 6-H in 1219.2-L
x 812.8-W x 152.4-H mm
Weight: 825 lbs (375 kg)

Corner:

Earth Blend 60019
Granite Blend 60021

Cap:

Earth Blend 60018
Granite Blend 60020

Top/ Corner



TOP/ CORNER
50-L x 26-W x 18-H in
1270-L x 660.4-W x
457.2-H mm

Weight: 1468 lbs (666 kg)

Earth Blend 60028
Granite Blend 60029